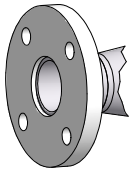


DRAWING FOR ILLUSTRATIVE PURPOSE ONLY

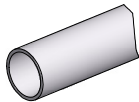
OPTION MODEL

MODEL 326/F
WITH FLANGES



FLANGE

MODEL 326/PE
WITH PLANE END PIPE



COMPRESSION COUPLING
VICTAULIC STYLE 99

SIZE	A	C
2"	DN50	740
3"	DN80	840
4"	DN100	965
5"	DN125	1040
6"	DN150	1200
8"	DN200	1350
10"	DN250	1525

STANDARD FEATURES

- Schedule 40 Pipe Construction
- Limit switches to indicate position
- Convey line pressure up to 6 bar
- Lines not to open outside environment during switching
- Full Vacuum
- Switching on the fly
- Converging Design with appropriate wear resistant lining
- Temperature up to 120°C continuous to 150°C

OPTIONAL FEATURES

- Stainless product contact
- Temperature up to 210°C
- Wear Resistant Construction
- Flanged connection
- Compliant to Atex 94 / 9 / CE zone 20 / 22
- Different voltage supplies

SPECIFICATIONS

Compressed Air:

- Clean and Dry at Correct Pressure Dew Point
- 6 bar for 4 bar Convey Pressure
- 24 vdc for Solenoid Valve

BUTTERFLY VALVE DIVERTERS ARE USED IN A WIDE FIELD OF APPLICATIONS.

THE SIMPLICITY OF TWO BUTTERFLY VALVES ALLOWS INDEPENDENT OPERATION OF THE DIVERTER LEGS.

SIMPLE OPERATION AND A SMOOTH BORE MAKES THESE DIVERTERS IDEAL FOR DENSE OR DILUTE PHASE PNEUMATIC SYSTEMS.